



## Northern Nevada and Northern California Regional Opioid Summit

**Location:** Whitney Peak Hotel, 255 N. Virginia St., Reno, NV, 89501



**Trainer:** Brian Serna, LPPCC, LADAC is the CEO/Founder of Serna Solutions and is a well sought after trainer and consultant in behavioral health issues related to Evidence Based Practices, Cultural Considerations and Ethical Issues.

**Who should attend?**  
Psychologists • LMFTs and LCSWs • Registered Nurses  
• Substance Use Disorder Treatment counselors  
• Other Behavioral Health Specialists/ Clinicians CE credit provided at **NO COST!**

**Description:** Community Reinforcement Approach (CRA): is a comprehensive behavioral program for treating persons with substance use disorders. It is based on the belief that environmental contingencies play a powerful role in encouraging or discouraging drinking or drug use. Consequently, it utilizes social, recreational, familial, and vocational reinforcers to assist consumers in the recovery process. The goal of CRA is to make a sober lifestyle more rewarding than the use of substances.

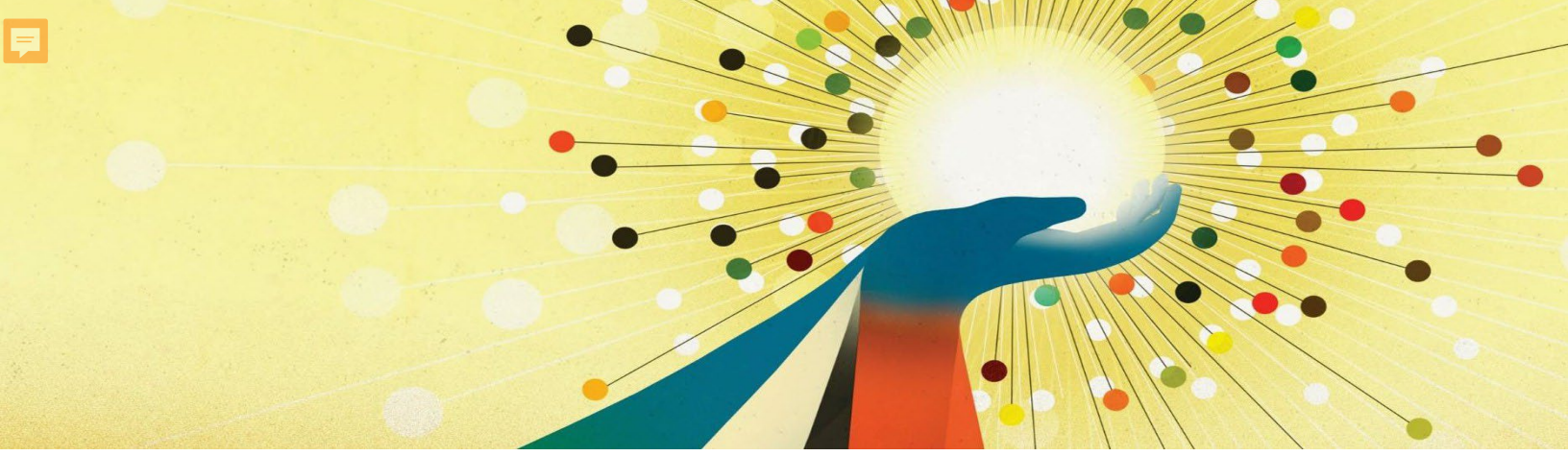
**Day 1: Tuesday April 16, 2024**  
**Day 2: Wednesday April 17, 2024**  
9am – 4pm

**REGISTER HERE**  
Breakfast and Lunch Provided

### LEARNING OBJECTIVES

At the end of the Regional Summit, participants will be able to:

1. Describe two (2) key findings regarding the research base and theoretical base for CRA.
2. Produce a Functional Analysis of Using Behavior and describe two (2) reasons why it is useful when helping a client to address addictive behavioral patterns.
3. Distinguish three (3) teachings of Communication Skills, the Happiness Scale, and Problem-Solving techniques to clients/consumers.
4. Identify at least one (1) technical assistance need within your local community.



# Northern Nevada and Northern California Regional Opioid Summit



The training course meets the qualifications for the provision of twelve (12.0) continuing education credits/contact hours (CEs/CEHs). UCLA Integrated Substance Abuse Programs (ISAP) is approved by the American Psychological Association to sponsor continuing education for psychologists. UCLA ISAP maintains responsibility for this program and its content.

### If you have questions

Contact Heather Momberg by e-mail [hmomberg@mednet.ucla.edu](mailto:hmomberg@mednet.ucla.edu) or by phone (310-206-2759)

UCLA ISAP is approved by the California Association of Marriage and Family Therapists to sponsor continuing education for LMFTs, LCSWs, LPCCs, and/or LEPs (Provider #64812). UCLA ISAP maintains responsibility for this program/course and its content. Course meets the qualifications for twelve (12.0) hours of continuing education credit for LMFTs, LCSWs, LPCCs, and LEPs as required by the California Board of Behavioral Sciences. UCLA ISAP is also an approved provider of continuing education for RADTs I/II, CADCs-CASs, CADCs I/II, CADCs-Cs, and LAADCs (CCAPP, #2N-00-445-1125), CATCs (ACCBC/CAAE, #CP40 872 C 0825), and CAODCs (CADTP, #151). Provider approved by the California Board of Registered Nursing, Provider #15455, for twelve (12.0) contact hours. CE credit will be awarded for full participation within 6-8 weeks following the conclusion of the Summit. Partial credit will not be available for those participants who arrive late or leave early on either day of the Summit.



UNR CASAT is an approved provider of continuing education credit for NCACs I/II and MACs through the National Association of Alcoholism and Drug Abuse Counselors (NAADAC, #98165). NV BOARD OF ALCOHOL, DRUG, AND GAMBLING-APPROVED; NV SOCIAL WORK - APPROVED; NV MFT/CPC -APPROVED; NAADAC 98165 NBCC ACEP6492. For questions concerning UNR continuing education program: Please contact, Nancy Roget, CASAT Executive Director 1664 N. Virginia St, MS 279 Reno, NV 775-784-6265.

**Refund/Cancellation Policy:**  
If you need a disability related reasonable accommodations/ alternative format for this event, please contact Heather Momberg

Instructions for Filing a Grievance Concerning UCLA ISAP's Continuing Education Program: Please contact Dr. Thomas E. Freese, CE Program Administrator, in writing (UCLA ISAP, 10911 Weyburn Avenue, Suite 200, Los Angeles, CA 90024-2886) or by phone (310-267-5397). Alternatively, you may contact Dr. Gloria Miele or Dr. James Peck, ISAP-affiliated doctoral-level psychologist responsible for program planning for the ISAP CE Program. Drs. Miele and Peck can be reached in writing at: 10911 Weyburn Avenue, Suite 200, Los Angeles, CA 90024-2886 or by phone at: 310-267-5888 (Miele) or 310-267-5346 (Peck).

**Funding for this initiative was made possible (in part) by grant no. 1H79TI085588 from SAMHSA. The views expressed in written conference materials or publications and by speakers and moderators do not necessarily reflect the official policies of the Department of Health and Human Services; nor does mention of trade names, commercial practices, or organizations imply endorsement by the U.S. Government.**

